

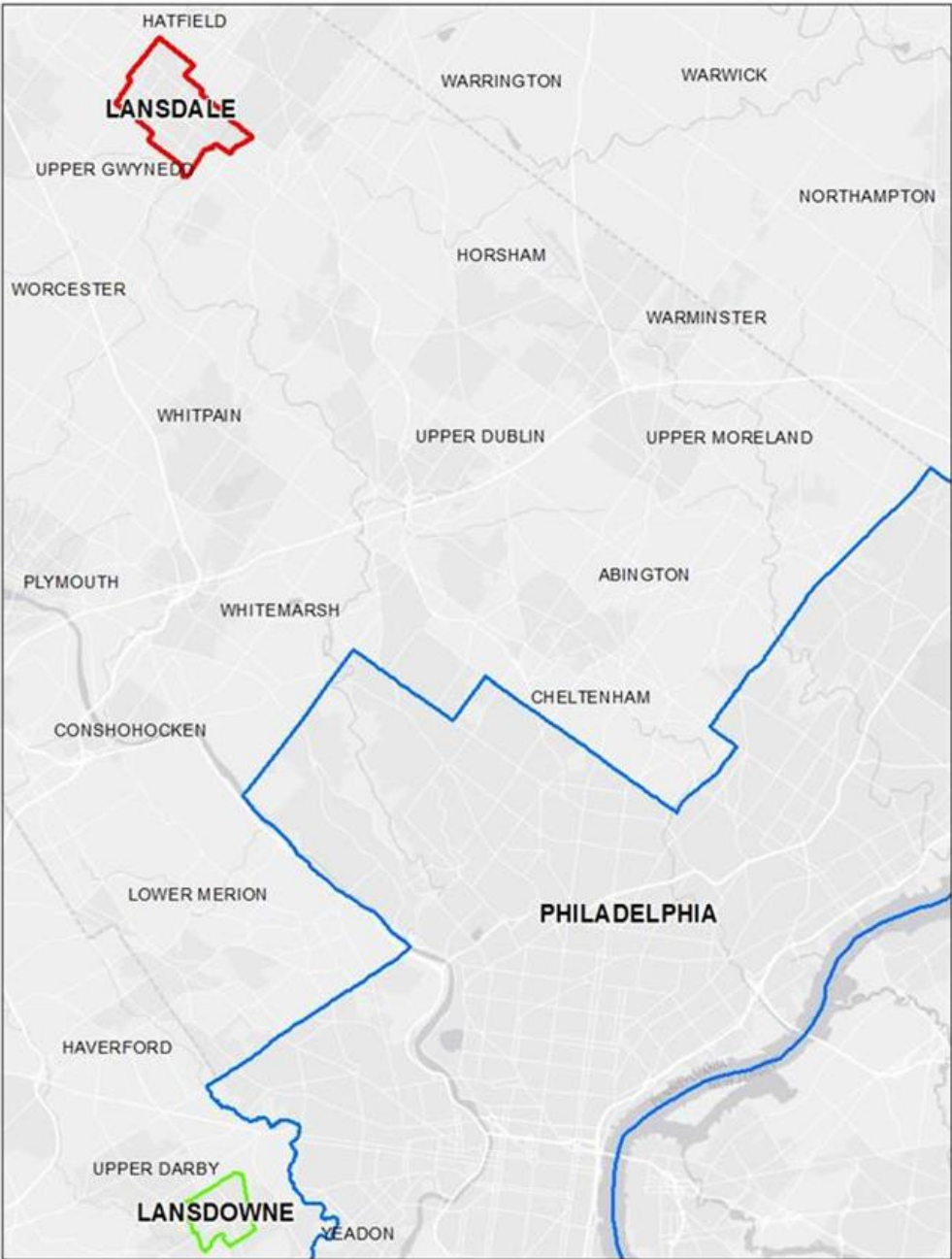


LANSDALE  
LIFE IN MOTION

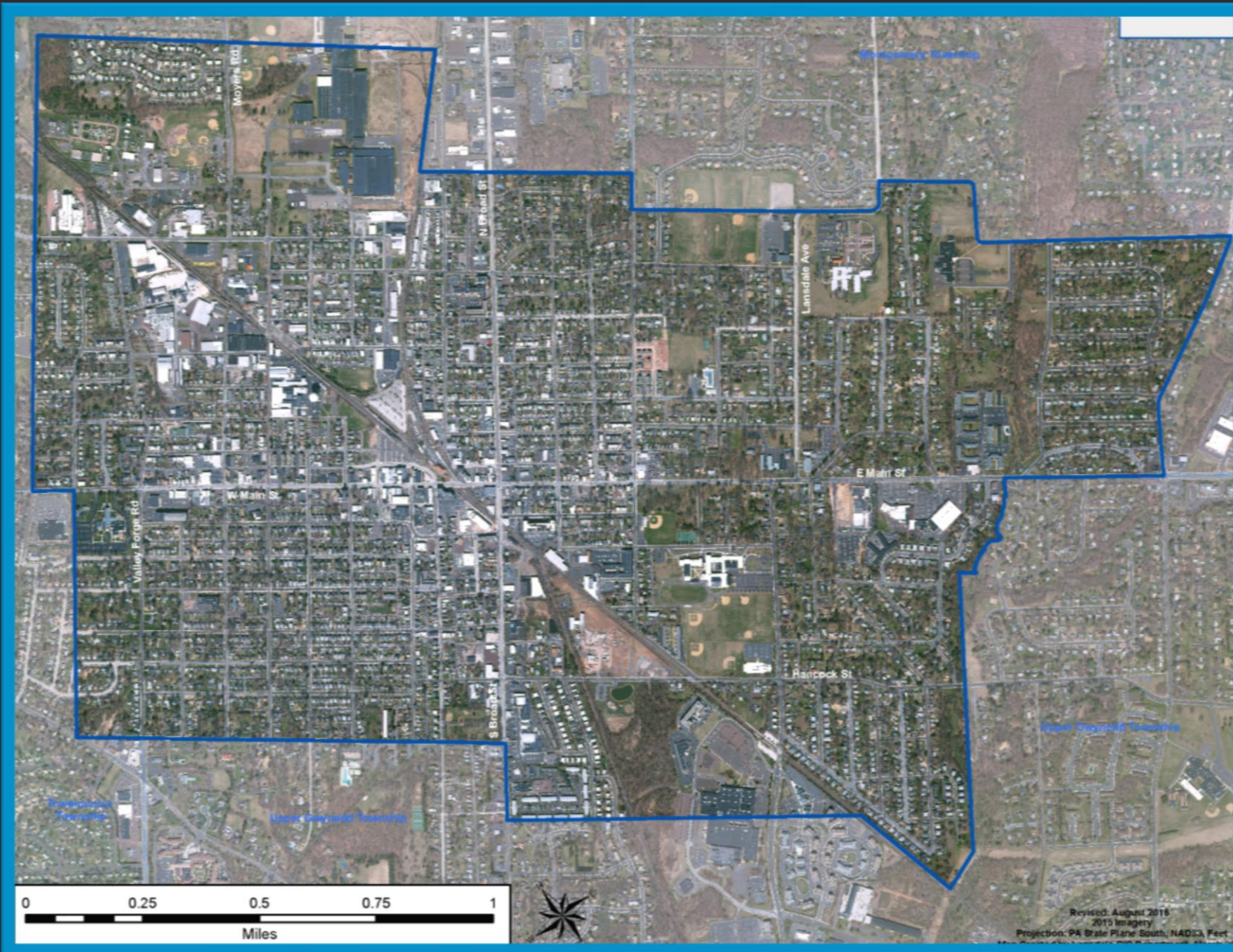
John J. Ernst, AIA

Borough Manager

Borough of Lansdale



Where is  
Lansdale?



## LOCATION

28 miles north of Philadelphia

## POPULATION

16,269

## SIZE

2.99 square miles

## STREETS

48 miles

## ALLEYS

35 miles

## ACTIVE SPACE

100 acres

## PASSIVE SPACE

56.5 acres / 21 Borough Parks

# Who We Are

---

For those seeking a suburban sanctuary with urban sensibilities, Lansdale, north of Philadelphia on the Lansdale/Doylestown (R5) line and the Pennsylvania Turnpike in Montgomery County, is an established, walkable, close-knit neighborhood conveniently centered on mobility where priorities find the right track.

Life in Motion

# Investing in Ourselves

---

- Newly Elected Officials
- Management Change
- Professional Staff

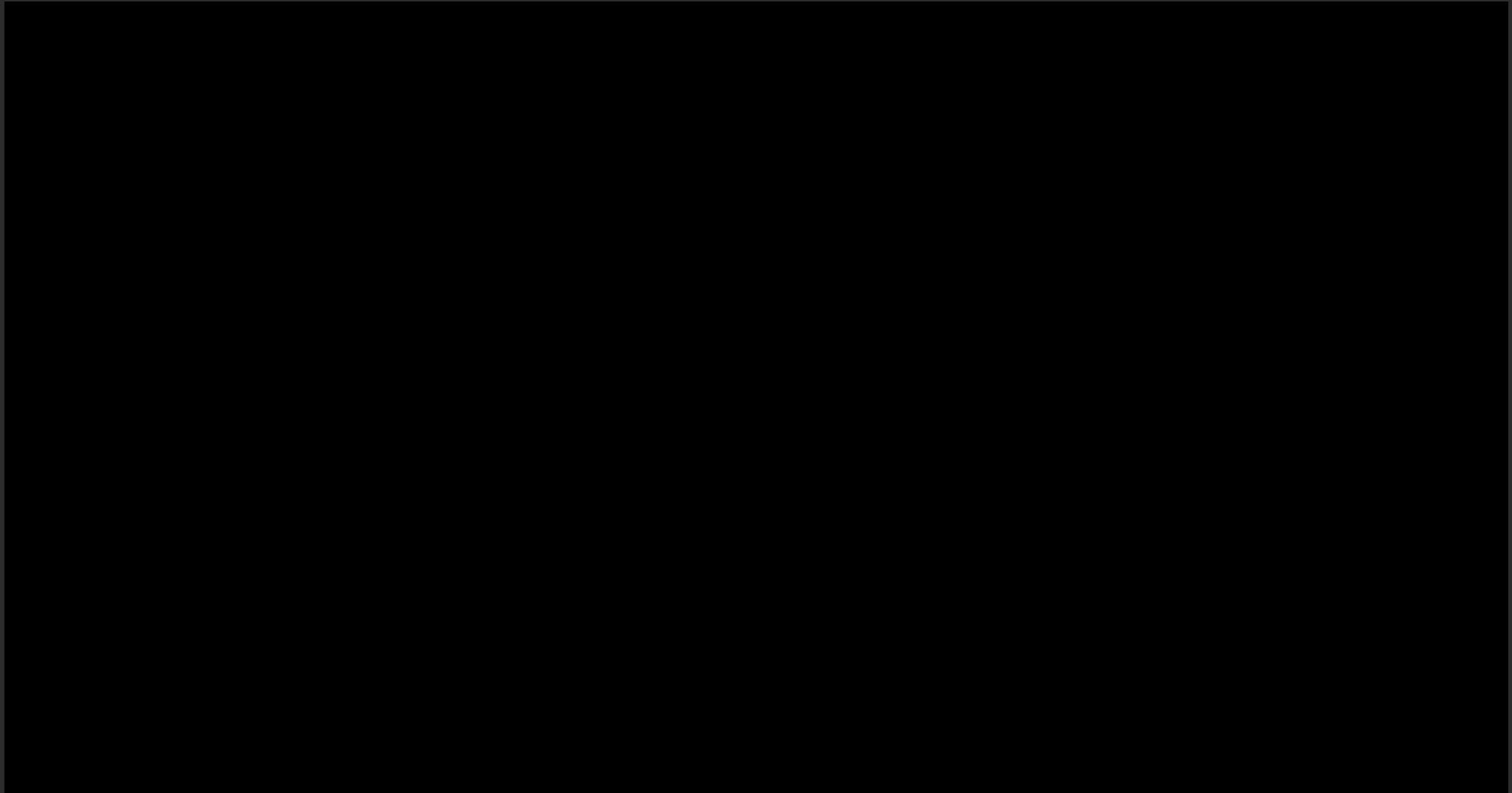
# Community Partnerships

---

- Find solutions to longstanding issues
- Complement long-range TOD development plans

# Development Corridor

---



# Parking Garage

*Septa*





# Parking Garage

*Septa*



# Parking Garage

*Septa*



# Lansdale Station Apts.

*EQUUS capital partners*



# Lansdale Station Apts.

*EQUUS capital partners*



# North Penn Commons

*YMCA, Manna, PEAK, Advanced Living*



# Land Development 2018



- 1. a) West Main Street Streetscape
- b) East Main Street Streetscape
- 2. Wood-Vine Street Connector
- 3. Municipal Complex
- 4. SEPTA 9<sup>th</sup> Street Station

- 5. SEPTA Parking Garage
- 6. Railroad Avenue
- 7. Madison Street Widening
- 8. Madison Parking Lot
- 9. Liberty Bell Trail

- 10. Cannon Square
- 11. Williamson Square
- 12. Penn Square
- 13. Andale Green
- 14. North Penn Commons

- 15. Elm Terrace Gardens
- 16. 1000 N. Cannon Avenue
- 17. Walnut Street Apartments
- 18. Freight House Property
- 19. Skate Park

# Multimodal Transportation

---

- Walkable community with access to multiple transportation options
- Select the most practical transport mode based on need

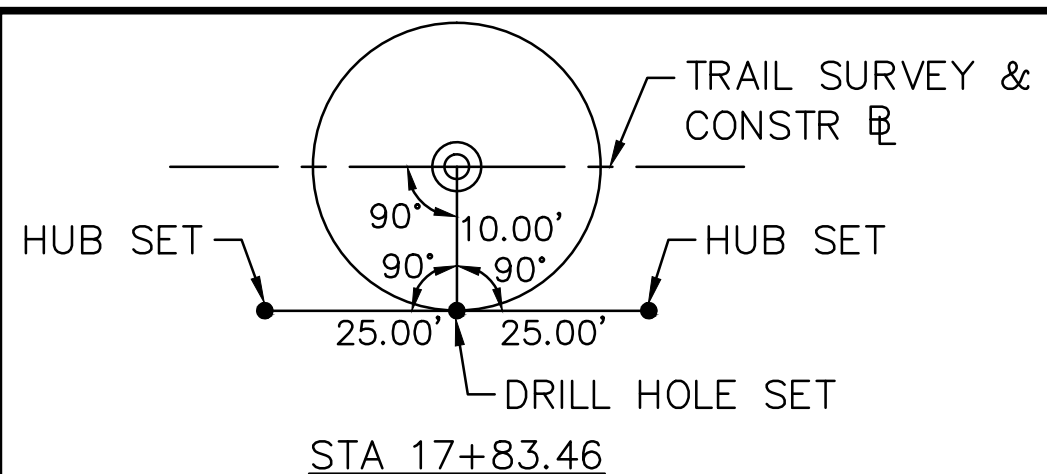
# Liberty Bell Trail

*pedestrian, bicycle*

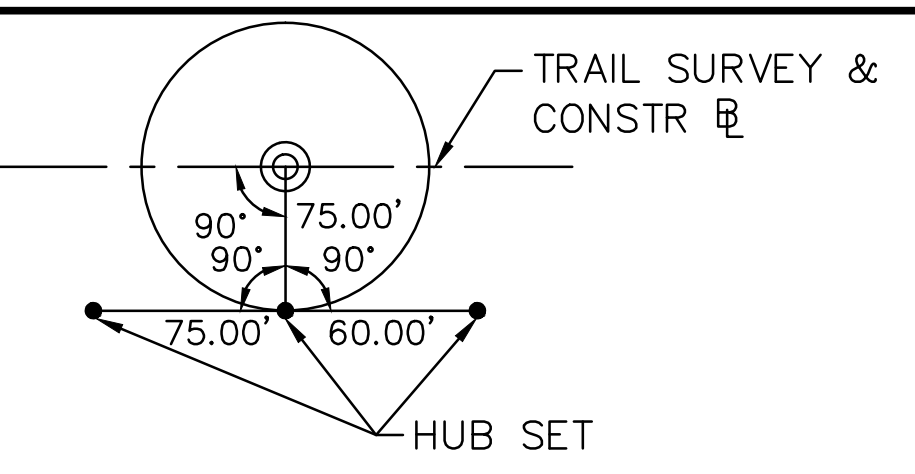




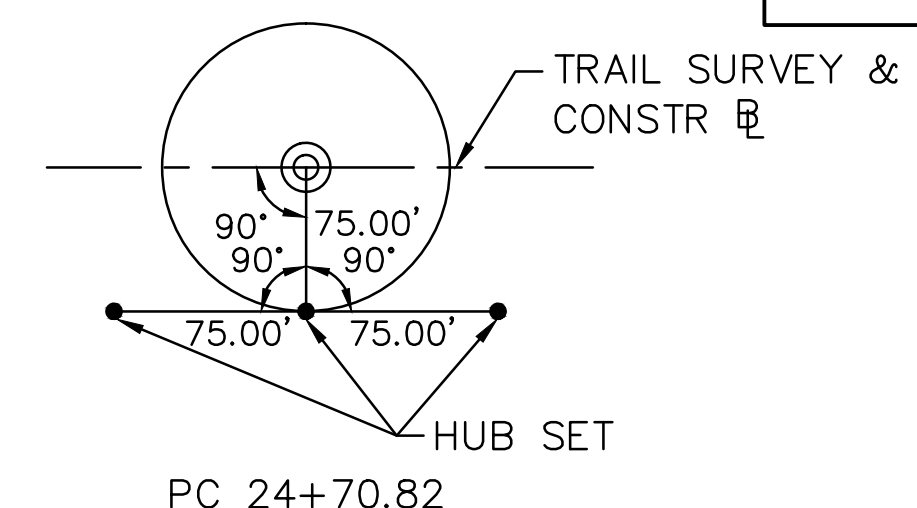
DISTRICT	COUNTY	ROUTE	SECTION	SHEET
6-0	MONTGOMERY	0000	LBT	13 OF 17
BOROUGH OF LANSDALE				
REVISION NUMBER	REVISIONS	DATE	BY	



BM #2 ELEV 362.86  
73.38' RT STA 19+61.62 EBL  
PK NAIL



BM #3 ELEV 362.48  
28.88' LT STA 23+94.23 EBL  
IRON REBAR



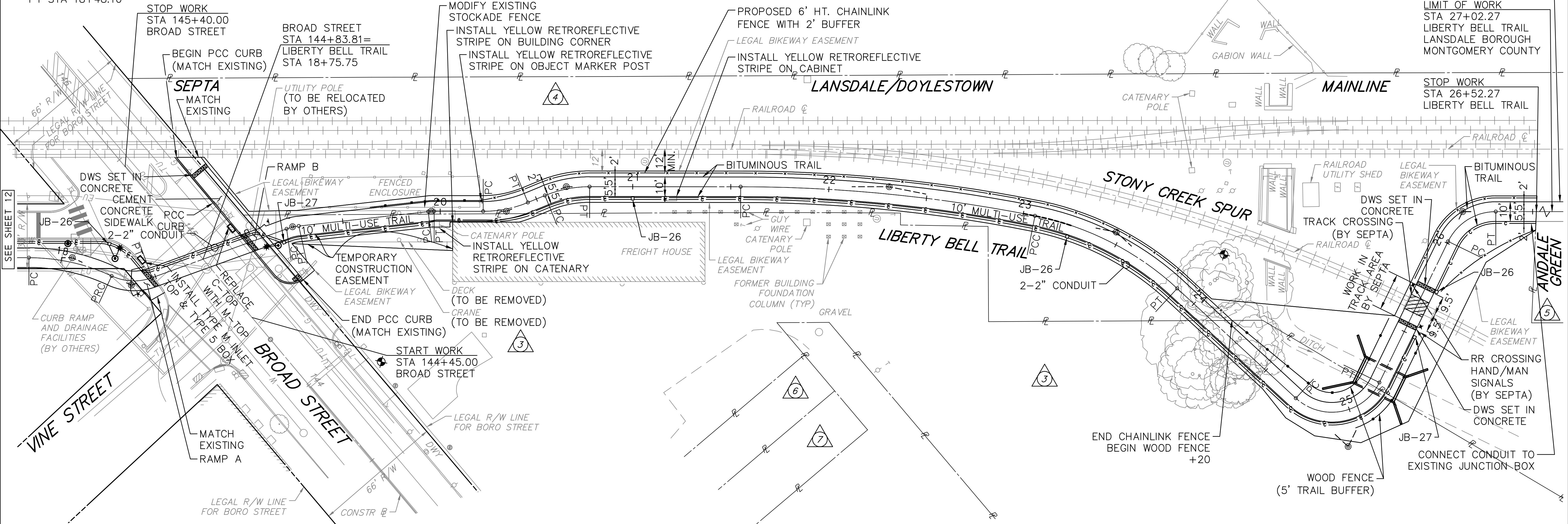
PI STA 25+07.15  
Δ = 106°45'17" LT  
T = 36.33'  
L = 50.31'  
R = 27.00'  
E = 18.26'  
PC STA 24+70.82  
PT STA 25+21.13

PI STA 18+38.11  
Δ = 044°51'11" LT  
T = 11.14'  
L = 21.14'  
R = 27.00'  
E = 2.21'  
PC STA 18+26.96  
PT STA 18+48.10

PI STA 20+33.74  
Δ = 22°19'54" LT  
T = 11.84'  
L = 23.39'  
R = 60.00'  
E = 1.16'  
PC STA 20+21.90  
PT STA 20+45.29

PC 21+55.01

PC 24+70.82



PI STA 18+05.56  
Δ = 024°55'25" RT  
T = 22.10'  
L = 43.50'  
R = 100.00'  
E = 2.41'  
PC STA 17+83.46  
PT STA 18+26.96

PI STA 19+24.32  
Δ = 13°34'52" RT  
T = 3.22'  
L = 6.40'  
R = 27.00'  
E = 0.19'  
PC STA 19+21.10  
PT STA 19+27.50

PI STA 19+95.40  
Δ = 6°21'58" RT  
T = 1.50'  
L = 3.00'  
R = 27.00'  
E = 0.04'  
PC STA 19+93.90  
PT STA 19+96.90

PI STA 20+66.47  
Δ = 22°19'54" RT  
T = 11.84'  
L = 23.39'  
R = 60.00'  
E = 1.16'  
PC STA 20+54.63  
PT STA 20+78.01

PI STA 22+30.77  
Δ = 11°15'11" RT  
T = 75.76'  
L = 151.03'  
R = 769.00'  
E = 3.72'  
PC STA 21+55.01  
PCC STA 23+06.05

PI STA 23+48.31  
Δ = 31°28'12" RT  
T = 42.26'  
L = 82.39'  
R = 150.00'  
E = 5.84'  
PCC STA 23+06.05  
PT STA 23+88.43

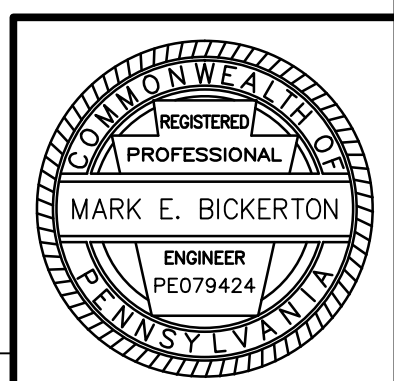
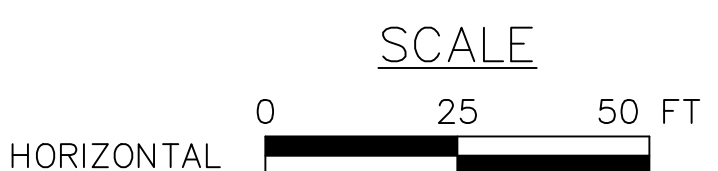
**EXISTING STRUCTURE DATA**

N/A  
**PROPOSED STRUCTURE DATA**  
 STATION 25+22.50  
 PRECAST CONCRETE ARCH STRUCTURE  
 SPAN = 1 @ 14'-0"  
 VERTICAL CLEARANCE = 8'-0"  
 CURB TO CURB =  
 OUT TO OUT =  
 SKEW = 0°  
 STRUCTURE NUMBER N/A  
 RECOMMENDED

**HYDRAULIC DATA**

DRAINAGE AREA = 0.19 MI<sup>2</sup>  
 FREQUENCY = 100 YEAR  
 MAGNITUDE = 483 CFS  
 ELEV = 358.50  
 VELOCITY = 6.61 FPS

- LEGEND**
- PROPOSED DECORATIVE OVERHEAD LIGHT AND POLE FOUNDATION, TYPE P
  - TYPE P FOUNDATION (FOR FUTURE PEDESTAL STREETLIGHT)
  - PROPOSED JUNCTION BOX (TYPE AS NOTED)
  - 2" CONDUIT



PENNONI ASSOCIATES, INC.  
 FILE NAME: V:\P\BORO\LANSDALE\DESIGN\LIBERTYBELL2404  
 PEN TABLE: PENNONI\_NGS.STB  
 PLOT DRIVER: DWG TO PDF.PC3  
 DATE PLOTTED: 11/11/2014 10:58:58 AM  
 USER NAME: MARK E. BICKERTON

# SEPTA Regional Rail

*commuter trains*



- Three (3) commuter stations within borough boundaries

# SEPTA Bus Routes

*passenger lines*



- Two (2) bus lines within borough boundaries

# Pennsylvania Community Transportation Initiative (PCTI)

*pedestrian, bicycle*



# Enhanced Crosswalks

*pedestrian*



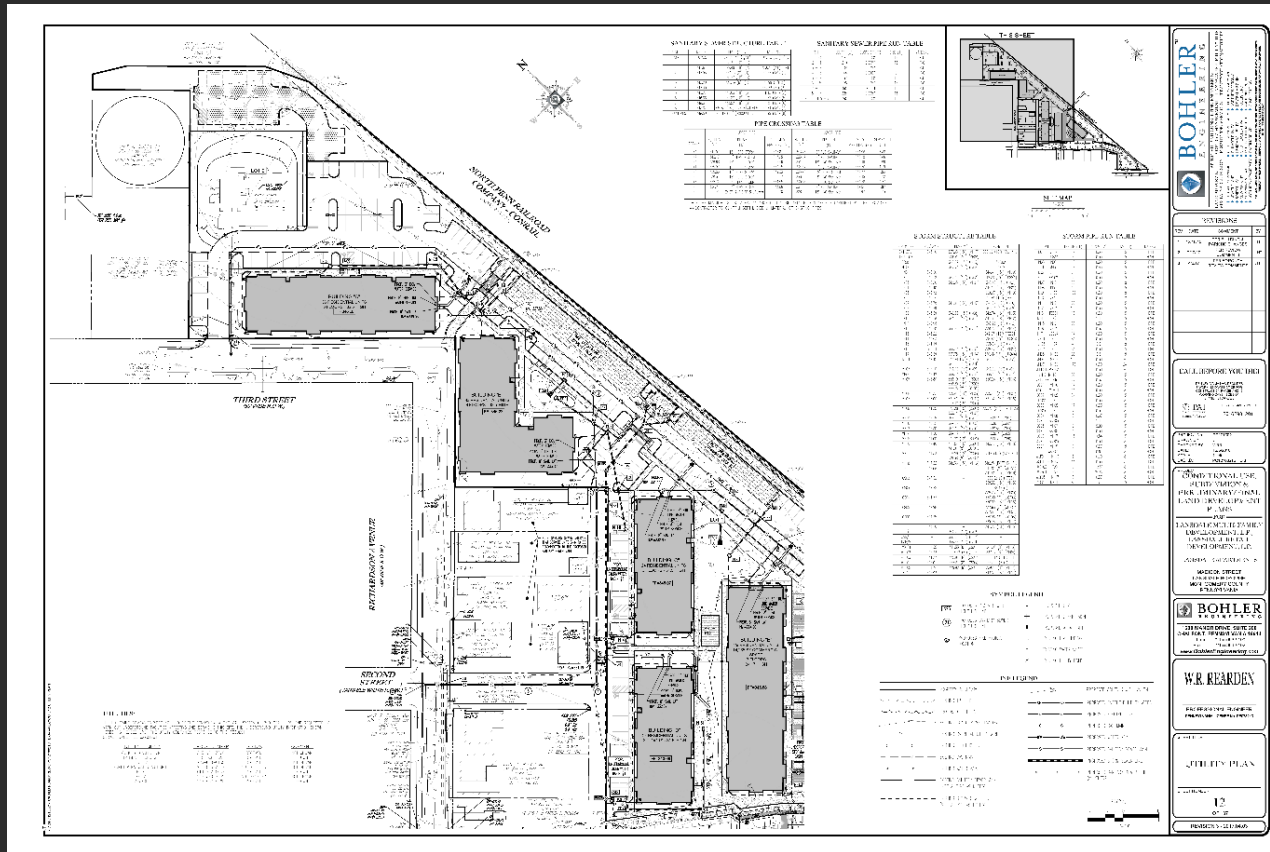
# Economic Development

---

- Streamlined process with professional staff for an expedited process
- Known success attracts further development

# Engaging Developers

*quick review process*



# Sustaining Relationships

*success stories*



**North Penn Commons**  
*Building Community on Common Ground*



**SEPTA**





# Investment Assistance

---

- Grants with matching Borough funds
- Tiered Economic Incentives and Façade Improvement grants for Borough businesses

# Funding for Projects

*maximizing opportunities*

Liberty Bell Trail

**\$841,000**

DVRPC, PennDOT Transportation Alternatives Program (TAP)

Community  
Development  
Block Grant  
(CDBG)

**\$100,000**

Montgomery County Housing and Community Development

# Funding for Projects

*maximizing opportunities*

Madison Street	\$500,000	Keystone Community Partnership (KCP)
Madison Parking Lot	\$2.5 million	Redevelopment Assistance Capital Program (RACP)
Signal Partnership Program	\$185,150	PennDOT Green Light—Go

# New Businesses

*more than main street*



# New Businesses

*coming soon*





LANSDALE  
LIFE IN MOTION

# Thank You

[jernst@lansdale.org](mailto:jernst@lansdale.org)  
215-368-1691